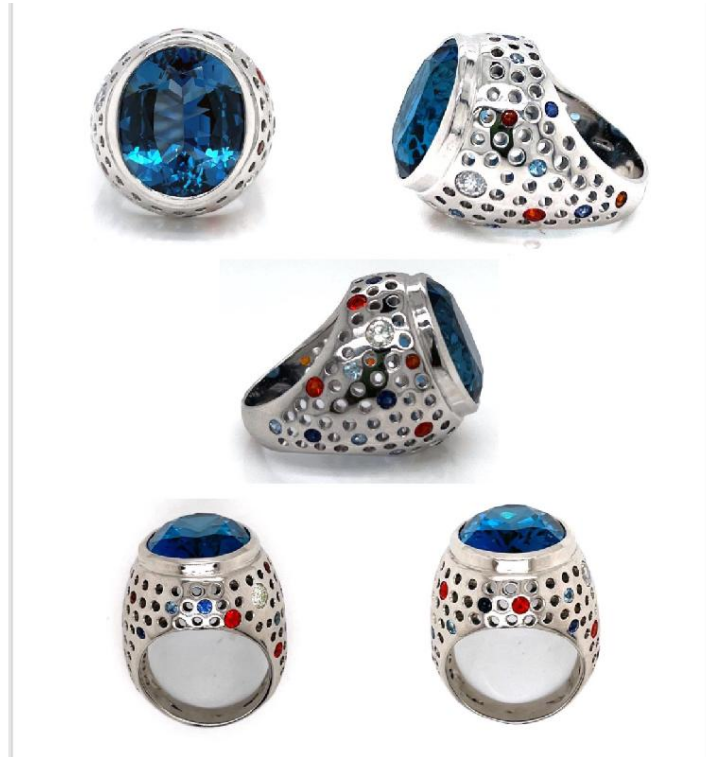


LOST



Please Help!

I'm devastated to have lost my one of a kind white gold ring at Wellcome Collection, it has a large 16.5 carat faceted London blue topaz in centre, surrounded on either side with perforations some inlaid with diamond, sapphires, fire opals. It was a 40th gift and is hugely sentimental and made especially for me. Will offer a reward. It's the only one like it in existence so if you see it anywhere including pawn shops/jewellers/selling sites please do get in touch!

Please contact me online:

<https://whiteboomerang.com/post/dv9puq/>

